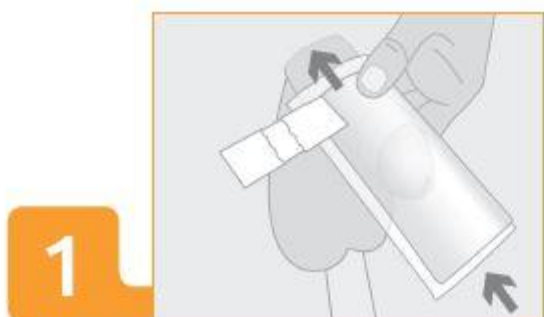
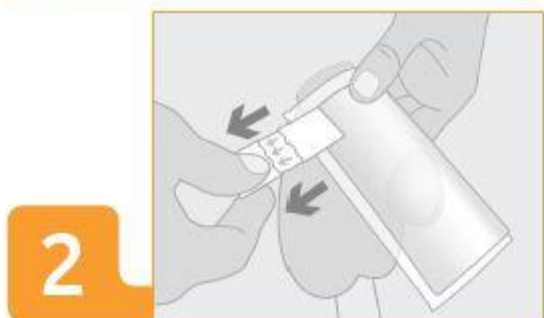


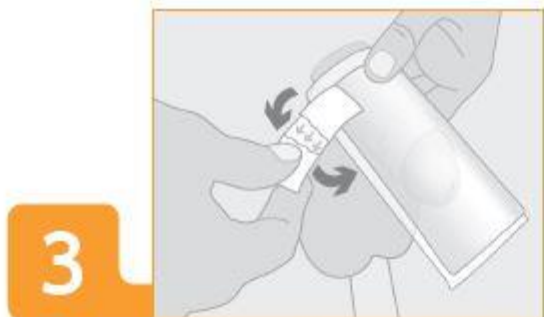
# IMPORTANT INSTRUCTIONS ON HOW TO USE X-TOP CORRECTLY



Pull the x-top pouch over the penis as far as possible.



Tighten and affix the hook and loop closure. Close it tight so it does not slip. The closure is adjustable so it can be re-fastened as often as needed. It's important that it stays in place.



Wear tight fitting underwear or briefs, no boxers please.

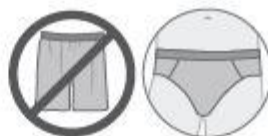
Change the x-top when needed, but at least once a day.



Dispose of used x-tops with regular household waste.

## Important!

To make sure the x-top stays in place, regularly check and adjust when necessary.



## Reminder!

Always wear close underwear, no boxer shorts!